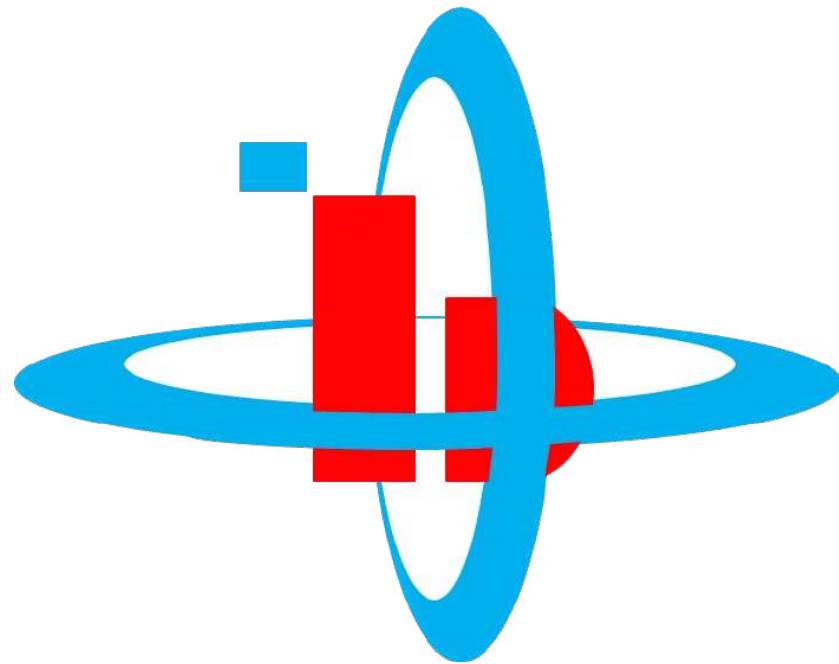


PT. BILLINDO MANDIRI UTAMA

Elevator Escalator Expert

Mechanical Electrical Plumbing Contractor



Let's elevate your next project together.

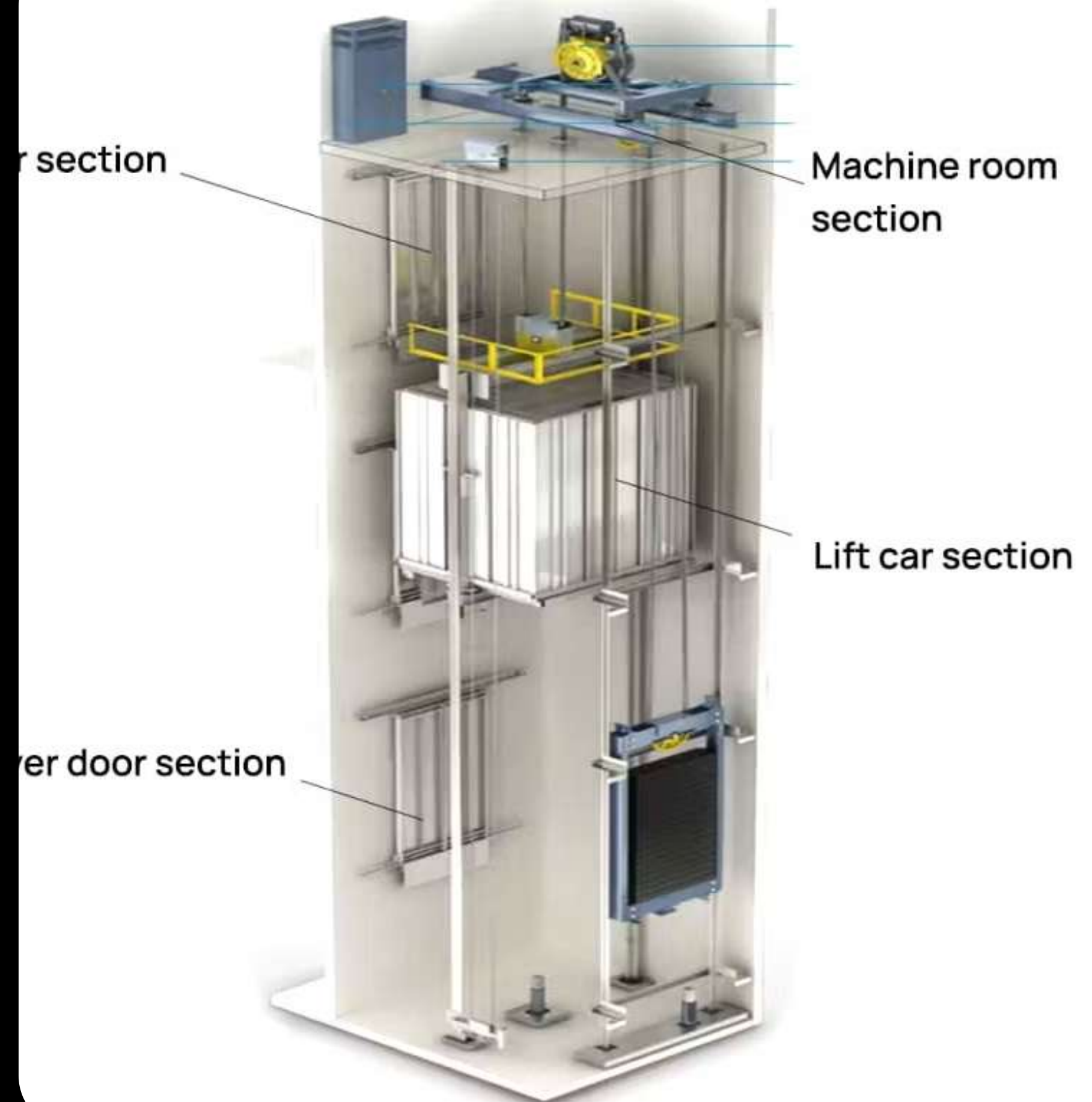
About Us

Founded in 1999 by Mr. Billy (uncle) and Mrs. Rita (niece), **PT. Billindo Mandiri Utama** is a trusted name in vertical transportation systems. We serve a diverse range of sectors — from office towers to shopping malls, hospitals, schools, apartments, and hotels.

With a strong commitment to safety, innovation, and customer satisfaction, our team delivers quality that lasts. We go beyond installation — offering long-term service, maintenance, and engineering support for every client.

刘義強 Billy (叔叔) 和 温米雪 Rita (侄女) 于 1999 年创立的 PT. Billindo Mandiri Utama 是垂直运输系统领域值得信赖的品牌。我们的服务范围广泛，从办公楼到购物中心、医院、学校、公寓和酒店。

凭借对安全、创新和客户满意度的坚定承诺，我们的团队能够提供经久耐用的质量。除了安装，我们还为每位客户提供长期服务、维护和工程支持。



Vision

To become Indonesia's leading vertical transportation company by offering cutting-edge technology, seamless service, and customer-first solutions. We aim to set the standard in efficiency, reliability, and value.

通过提供尖端技术、无缝服务和客户至上的解决方案，成为印度尼西亚领先的垂直运输公司。我们的目标是在效率、可靠性和价值方面树立标准。



Mission

To consistently provide high-quality, reliable elevator and escalator systems with a dedication to excellence in every detail. Our mission is to exceed expectations, foster long-term relationships, and earn the loyalty of our clients through consistent performance and trust.

始终如一地提供优质、可靠的电梯和自动扶梯系统，在每个细节上都精益求精。我们的使命是超越期望，促进长期合作关系，并通过始终如一的表现和信任赢得客户的忠诚。



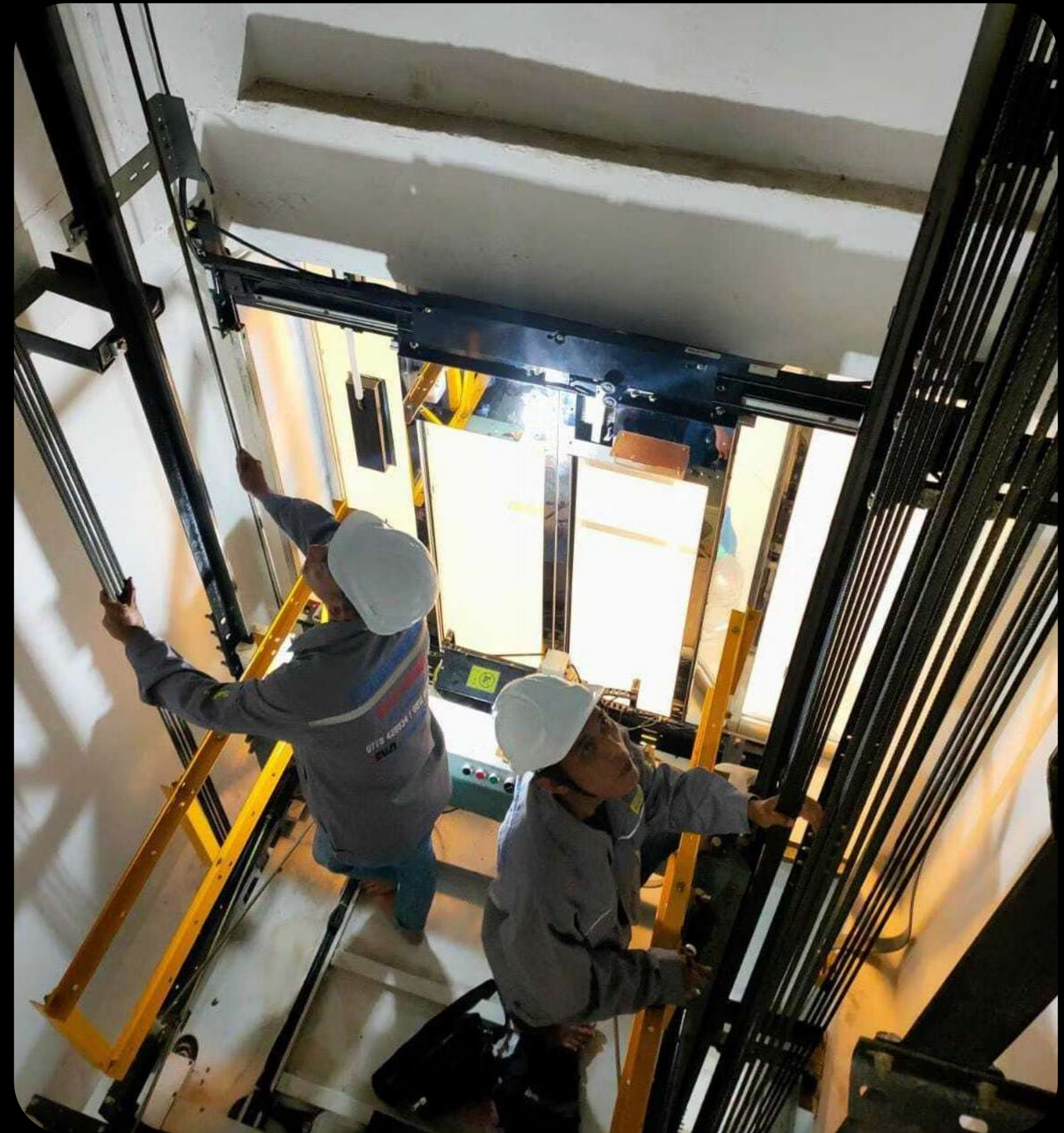
Services

- Elevator & Escalator Installation and Commissioning
- Elevator & Escalator Routine Maintenance and Repairs
- Air Conditioning Supply, Installation and Maintenance
- Mechanical Electrical Plumbing Contractor

From consultation to installation and after-sales support – we handle it all with precision and professionalism.

- 电梯和自动扶梯安装与调试
- 电梯和自动扶梯日常维护和修理
- 空调供应、安装和维护
- 机械电气管道承包商

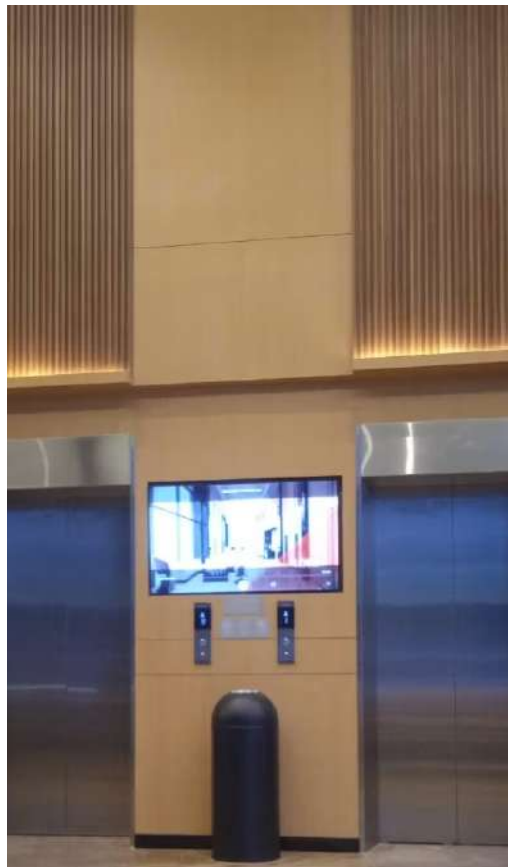
从咨询到安装，再到售后支持，我们都能精准、专业地完成。



Harper Premier Nagoya Thamrin City

HARPER

BY ASTON



PT. BILLINDO MANDIRI UTAMA has installed 3 (three) lift:

- 2 (two) passenger lift 19 floor capacity 1000 kg and speed 1.75 m/s
- 1 (one) cargo lift capacity 1600 kg and speed 1.75 m/s



The Manor Kuala Lumpur Malaysia

Standing at **46-storey** tall in a single tower, the freehold and low density development offers condominium suites of one-bedroom, two-bedroom, three-bedroom layout sized between 999 and 2,628 sq. ft.

PT. BILLINDO MANDIRI UTAMA has installed 11 (eleven) passenger lift

- 8 unit passenger lift 46 floor capacity 1600 kg and speed 4.0 m/s
- 1 unit passenger lift capacity 630 kg and speed 1.0 m/s
- 2 unit passenger lift capacity 400kg and speed 0.4 m/s



One Batam Mall Indonesia



Located at the heart of the city, One Batam Mall designed to be the largest and most unique mixed use in Batam.

PT. Billindo Mandiri Utama has supplied and installed

- a. 36 (thirty six) escalators
- b. 6 (six) travelators
- c. 4 (four) cargo elevators
- d. 4 (four) passenger elevators



21 Cineplex Batam & Tanjung Pinang



PT Nusantara Sejahtera Raya / 21 Cineplex is the largest cinema chain in Indonesia, serving 46 cities in the country.

Since year 2000 until now PT. Billindo Mandiri Utama serviced and maintained 6 (six) 21 Cinema with total 177 unit Air Conditioner

- a. 21 Nagoya Hills Mall Batam 27 unit Air Conditioner
- b. 21 BCS Mall Batam 27 unit Air Conditioner
- c. 21 Panbill Mall Batam 31 unit Air Conditioner
- d. 21 TCC Mall Tanjung Pinang 34 unit Air Conditioner
- e. 21 Mega Mall 29 unit Air Conditioner
- f. 21 One Batam Mall 29 unit Air Conditioner

Indonesia Morowali Industrial Park



PT Indonesia Morowali Industrial Park (IMIP) manages an integrated nickel-based industrial estate with the main products being nickel, stainless steel and carbon steel.

PT. Billindo Mandiri Utama has supplied and installed 5 (five) passenger elevators



Infinite Studio Nongsa Batam



An integrated media entertainment and creative services company based in Singapore and Batam, Indonesia.

Infinite Studios Batam houses another two soundstages and a 1-hectare film backlot.

PT. Billindo Mandiri Utama has performed Mechanical Electrical Plumbing includes:

- Install Precision AC for Server Room
- Install Fire Alarm & Fire Extinguisher System
- Install Network Data Cable
- Install Clean Water Piping System



Swissbell Hotel Harbour Bay Batam



As the ultimate combination of hotel, mall, and trade center, Swiss-Belhotel Harbour Bay allows easy access to various entertainment and leisure activities and many dining options. The hotel is ideally located in the central business and Tourism district of Batam, just a nine minutes stroll from The Promenade – Harbour Bay. For business or leisure travelers to Batam, Swiss-Belhotel Harbour Bay is the ideal place to stay.

PT. Billindo Mandiri Utama has ongoing project to install 8 (eight) lift:

- 6 (six) passenger lift capacity 1600 kg and speed 1.5 m/s
- 2 (two) cargo lift capacity 2000 kg and speed 1.0 m/s

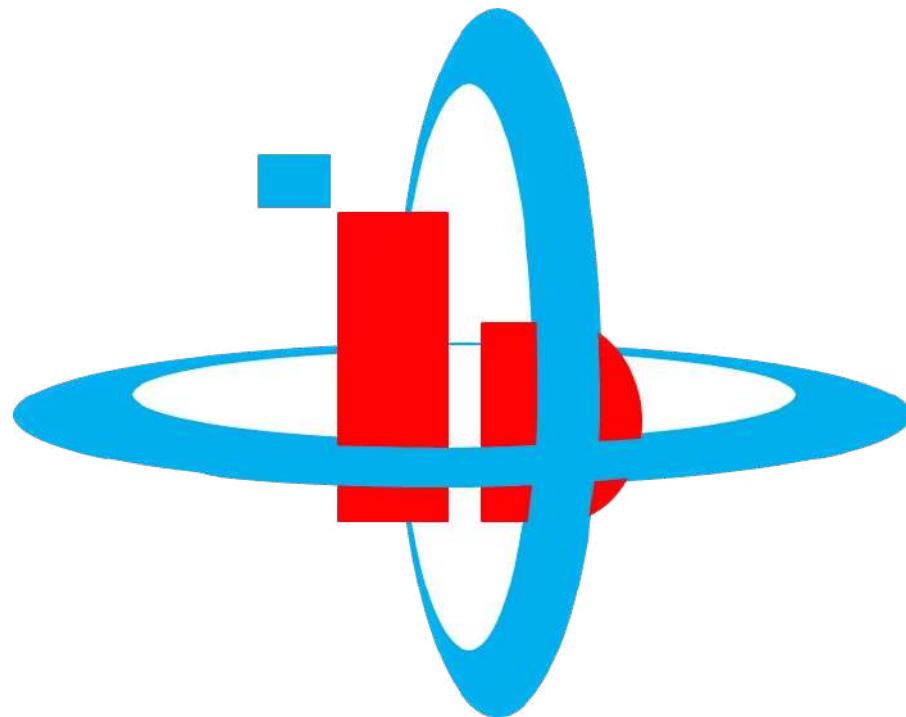


Featured Clients



PT. BILLINDO MANDIRI UTAMA

Let's elevate your next project together.



<https://billindomandiriutama.com>

- ✓ Over 25 Years of Industry Experience
- ✓ Trusted Across Indonesia and Malaysia
- ✓ Turnkey Solutions from Design to Maintenance
- ✓ Committed to Safety & Customer Satisfaction



Jalan Yos Sudarso
Komplek Pergudangan Wahana A No 3
Batam - Indonesia 29424
Telepon +62 778 428 834

